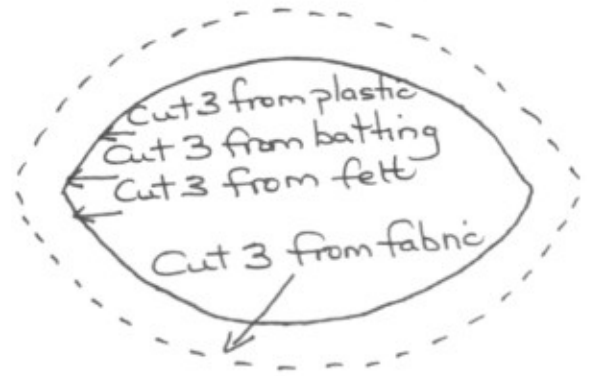


THIMBLE CASE

With the template provided cut the following:

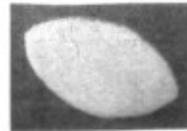
- 3 pieces of plastic (I used template plastic)
- 3 pieces of batting
- 3 pieces of felt
- 3 pieces of fabric (add seam allowance)



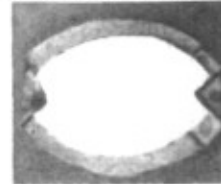
1. Spread some glue on one of the pieces of plastic.



2. Place a piece of batting onto the glue side of the plastic piece.



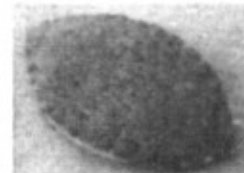
3. Place the wrong side of one of the pieces of fabric against the wrong side of the batting. Turn the points down and ends and hold in place with a bit of glue.



4. Using strong quilting thread, draw fabric edges over the fabric, criss-crossing the thread over the plastic.



5. Stitch a piece of felt onto the back side of the piece, covering the plastic. Repeat steps 1-5 with the other 2 pieces.



6. Slipstitch the edges of two of the shapes together with strong quilting thread. Insert the third piece between the two and slipstitch one of the edges of the adjacent piece.



7. Press the ends of the case together to open it. Pop your thimbles in!



Submitted by Carol MacNamara
On behalf of Special Projects Committee